



# 2012 Eastern Canadian Biathlon Championships & ATLANTIC CUP # 3

**INVITATION**

17-19 February 2012  
Brookvale, Prince Edward Island



Health and  
Wellness





**A MESSAGE OF WELCOME  
FROM BIATHLON PRINCE EDWARD ISLAND**

Dear Biathlon Friends

It is a privilege and a pleasure to welcome you to the 2012 Eastern Canadian Biathlon Championships and Atlantic Cup #3 being held in Brookvale, PE, 17-19 February 2012. After many years of limited Biathlon activity on the Island, and the success of the Atlantic Cup at Brookvale the past two years, the legacy of the 1991 Canada Winter Games once again welcomes members of Biathlon Canada to the Island.

Please come and participate at the site of the 1991 Canada Winter Games, which has recently been upgraded once again to ensure a safer and more enjoyable competition and enjoy a taste of Island hospitality.

Sincerely,

Bob Bentley  
President  
Biathlon Prince Edward Island

**2759 Glasgow Road, RR#3 Hunter River, PE C0A 1N0  
Tel:(902)964-3294., e-mail: [biathlonpei@gmail.com](mailto:biathlonpei@gmail.com)**

## **WELCOME MESSAGE FROM THE ORGANIZING COMMITTEE**

Dear Coaches and Competitors

On behalf of Biathlon PEI, I wish to extend my warmest invitation to you to the 2012 Eastern Canadian Biathlon Championships & Atlantic Cup #3 in Brookvale, PE, February 17-19, 2012. Please find enclosed our information package for this event.

The organizing committee and its title sponsor for the events, The Province of Prince Edward Island, look forward to you joining us in making this significant happening a real success.

Yours truly,

Murray Wylie  
Competition Chief



## **2012 Eastern Canadian Biathlon Championship & ATLANTIC CUP #3**

**BROOKVALE, PRINCE EDWARD ISLAND, 17-19 FEBRUARY 2012**

### **INVITATION INFORMATION**

#### **The Host Community**

Brookvale is a provincial park located in central Prince Edward Island. The venue lies approximately 25 kilometers West of Charlottetown the Provincial Capital and a similar distance from Borden-Carlton, the gateway to PEI.

#### **The Venue**

The Brookvale Provincial Park Biathlon facility is located a short distance (1 km) from the downhill ski site and is the home to both the Cross Country and Biathlon venues. Built prior to hosting the Canada Winter Games in 1991, the range has undergone several upgrades in 2008 and again in 2010 and now has a shooting range of 24 mechanical targets. The course consists of all the required lengths of trails and varying degrees of difficulty. At the time of the event, the average daytime temperatures are expected to vary between minus 15 to 0 degrees C with approximately 30 centimeters of snow on the ground. A trail map and stadium diagram is attached.

#### **The Organizers**

Your host, Biathlon PEI, has created an organizing committee that will both successfully conduct the event as well as foster the development of officiating within PEI. The Organizing Committee for this event is made up of many senior officials who have worked at many levels of competition across Canada and some have International biathlon officiating experience. The key positions for this event are as follows:

Chairperson:	Bob Bentley
Competition Chief:	Murray Wylie
Competition Secretary:	Bob Bentley
Chief of Course:	Daniel Des Roches
Chief of Range:	Stephen Hale
Chief of Timing:	Bruce Ferguson
Chief of Stadium:	Linda Des Roches
Volunteer Coordinator	Connie MacKinnon

#### **Technical Delegate**

Bruce Jarvis, appointed by Biathlon Canada

#### **Rules**

The current IBU Event and Competition Rules will be in effect for the event, except as specifically modified by this invitation and by the Biathlon Canada Hosting Policy (version June 2011). Please note that Biathlon Canada modified the distances for Jr boys/girls in Nov 2011 to the distances as indicated below.

## Eligibility

All members of Biathlon Canada Divisions with a current membership card or appropriate day membership are eligible to participate in the classes as stipulated in this invitation or by the current Biathlon Canada hosting policy. Other nationalities may participate but are not eligible for medals.

**It is mandatory that all athletes have in their possession, and be able to show upon request, their PAL or Minor's Permit.**

## Classes of Competitors and Types of Competitions

The following competitions will be held for the classes as shown. The start order and sequence will be as noted below:

Athletes will compete on the following courses:

3.3 Km- Blue

2.5 Km – Green

2.0 Km – Red

1.5 Km – Orange

## Sprint Competitions

Category	Sequence	Total distance	Shooting Sequence
Men 21 +	3x3.3 (blue)	10 km	PS
Women 21+	3x2.5 (green)	7.5 km	PS
Junior Men	3x3.3 (blue)	10 km	PS
Junior Women	3x2.5 (green)	7.5 km	PS
Youth Men	3x2.5 (green)	7.5 km	PS
Youth Women	3x2.0 (red)	6 km	PS
Senior Boys and Girls	3x2.0 (red)	6 km	PS
Junior Boys and Girls	3x1.5 (orange)	4.5 km	PP
Master Women 35+	3x2.0 (red)	6 km	PS
Master Men 35+	3x2.0(red)	6 km	PS

## Pursuit Competition

Category	Sequence	Total distance	Shooting Sequence
Men 21 +	5x2.5 (green)	12.5 km	PPSS
Women 21+	5x2.0 (red)	10 KM	PPSS
Junior Men	5x2.5 (green)	12.5 km	PPSS
Junior Women	5x2.0 (red)	10 km	PPSS
Youth Men	5x2.0 (red)	10 km	PPSS
Youth Women	5x1.5 (orange)	7.5 km	PPSS
Senior Boys and Girls	5x1.5 (orange)	7.5 km	PPSS
Junior Boys and Girls	4x 1.5 (orange)	6 km	PPP
Master Women 35+	5x1.5 (orange)	7.5 km	PPSS
Master Men 35+	5x1.5 (orange)	7.5 km	PPSS

Competitors may compete only one category higher than their current age category, (e.g. a Youth Man may compete as a Junior Man but not as a Man. Senior Boys and Senior Girls must receive special permission from Biathlon Canada in order to compete as Youth Men or Youth Women in accordance with Annex A-4 of the Hosting Policy).

**2012 Eastern Canadian Biathlon Championship & ATLANTIC CUP # 3  
EVENT PROGRAM**

FRI, 17 FEB	0900 – 1200 1200 – 1600 1900	Site preparation Official Training Course and Range – All Classes no trail fees Team Captains Meeting: Election of the Juries, Draw for Sprint Competitions – Brookvale Nordic Lodge
SAT, 18 FEB	0900 – 0945 1000 1200 - 1245 1300 1600 1800	Zeroing – AM Classes Sprint Competition – AM Classes Zeroing – PM classes Sprint Competition – PM Classes Team Captains Meeting – Brookvale Nordic Lodge Banquet and Awards Presentations – location TBD
SUN, 19 FEB	0900 – 0945 1000  1300	Zeroing –All Classes Pursuit Competition – all classes  Awards Presentations – Brookvale Nordic Lodge Departures as Appropriate

**NOTE**

The competition timings and configurations may change depending on participation numbers for the various classes of competitors.

**Early/Unofficial Training**

Official Training has been organized for Friday afternoon but it will be possible to arrive for earlier training. The facility, course and range can be used at the normal trail/range fees as established by the Brookvale Provincial Park during unofficial training. **Please contact the Competition Secretary at [biathlonpei@gmail.com](mailto:biathlonpei@gmail.com) to arrange for unofficial training times**

**Competition Office**

There will be a competition office/information desk in the Nordic lodge from 1200 Friday until 1400 Sunday.

**Waxing Rooms**

Limited Waxing facilities will be available on site on a shared use basis

**Travel and On-site Transport Information**

The Organizers will not provide any travel or transport services for the participating teams. It is recommended that teams drive to the area in their own vehicles and then use them for local transport. However, the following information is provided so that teams can organize their own travel to the area and their transport to and from the hotels and the stadium.

**Air**

- Charlottetown Airport, located about 30 minutes from the venue
- Moncton Airport, located about 2 hours from the venue

## Bus

- Acadian Lines, 1-800-567-5151

## Vehicle Rentals

Most major vehicle rental agencies are located in the area.

Discount (800) 264-8909 (serves Charlottetown airport as well)

Hertz (800) 263-0600

Budget (800) 268-8900

## Accommodation and Meals

Teams are responsible for arranging their own accommodation and meals during the event. Lunch will be available for sale at a low cost at the Lodge on Saturday & Sunday.

For low cost accommodations an athlete village has been established in close proximity to the Brookvale site at Camp Abegweit in Augustine Cove. Also as winter accommodation during that period will be at a premium due to a hockey tournament we have taken the liberty of reserving accommodations in the facilities listed below. Please advise the Competition Secretary by January 15 if you wish to use the Athletes village at Camp Abegweit

There are a number of other hotels in the Summerside and Charlottetown area as well. Rifle storage will be in the team accommodations and is a responsibility of the teams.

HOTEL	PLACE	TIME TO STADIUM	DETAILS and APPROXIMATE COST	CONTACT
Camp Abegweit	Augustine Cove, PEI	20 min	Accommodates up to 25; shared accommodations. Limited showers; large kitchen & common area: approx \$40 per person for the weekend <a href="http://www.campabegweit.peipresbytery.net/">www.campabegweit.peipresbytery.net/</a>	Book through Competition Secretary
Central Maple Cottages	Hunter River	10 min	3 cabins available; 2- two bedroom (sleeps up to 6) one single bedroom (up to 4). \$75 per night double occupancy, plus \$6 per night per extra person	Book through Competition Secretary
Rodd Hotels and Resorts	Charlottetown	25 min	Several hotels from the chain in the area at varied prices	1-800-565-7633
Desable Motel	Desable PEI	10 min	3 suites available 2 two bedroom (sleeps up to 6; one bedroom & 74 per night double occupancy plus \$6 per night per extra person	1-902 658-2387

## Event Reception with Awards Presentation

A post competition reception in the form of a pasta banquet will be held on Saturday, 18 February at approximately 1800 at a site in close proximity to Brookvale Ski Park. Presentation of awards for Saturday's competition will be held at that event. Cost of this activity is \$15 per person.

## **Awards**

Separate awards will be presented for the Eastern Canadian Biathlon Championships and the Atlantic Cup. First, Second, and Third will be awarded in each class, if there are sufficient competitors in the class.

## **Registrations**

Registrations by name and class, **by e-mail if possible**, are requested **no later than 1 February 2012**. Registrations are to be sent to the Competition Secretary: Bob Bentley: email [biathlonpei@gmail.com](mailto:biathlonpei@gmail.com) phone: 902 964-3294. The registration form is attached in Word format.

## **Entries**

Entries for the Sprint competitions must be submitted to the Competition Secretary no later than 1700 hrs on Fri, 17 Feb 2012. **If the arrival of the team is too late, entries will be made, and drawn, based on the registrations by name.** Entries may be emailed to the Competition Secretary in advance if desired.

Entries in the Pursuit competition are not required as all competitors who take part in the Sprint are assumed to be entered. Names of athletes who will not start in the Pursuit competition will be reported to the Competition Secretary as soon as possible and at least two hours before the start. Athletes who have not taken part in, or did not complete the qualifying competition, will be drawn randomly to determine a start order, with the same fixed five second interval, and will start after the last qualified competitor in a given class.

## **Entry Fees**

Entry fees are payable to Biathlon PEI on arrival, by cheque or cash and will be charged as follows for all participants: **one competition \$35, two competitions \$60**. This fee includes the trail/range fees for competition days and official training. Cost of the **Saturday banquet is \$15 per person**.

## **Trail and Range Fees**

Trail and range fees for unofficial training are as follows:

**Adult** - \$7.00 per day per person

**Student** - \$7.00 per day per person

Trail and Range fees are payable to Brookvale Provincial Park employees for periods outside the competition. Prices do not include GST.

## **ATTACHMENTS**

- A. Registration by Name Form
- B. Biathlon Canada Hosting Policy Annex A-4
- C. Brookvale area map
- D. Trail Maps
- E. Stadium Layout



**BIATHLON CANADA HOSTING POLICY ANNEX A-4 ----- SENIOR BOYS AND SENIOR GIRLS  
APPLICATION TO SKI OUT OF AGE CLASS (YOUTH PARTICIPATION REQUEST)**

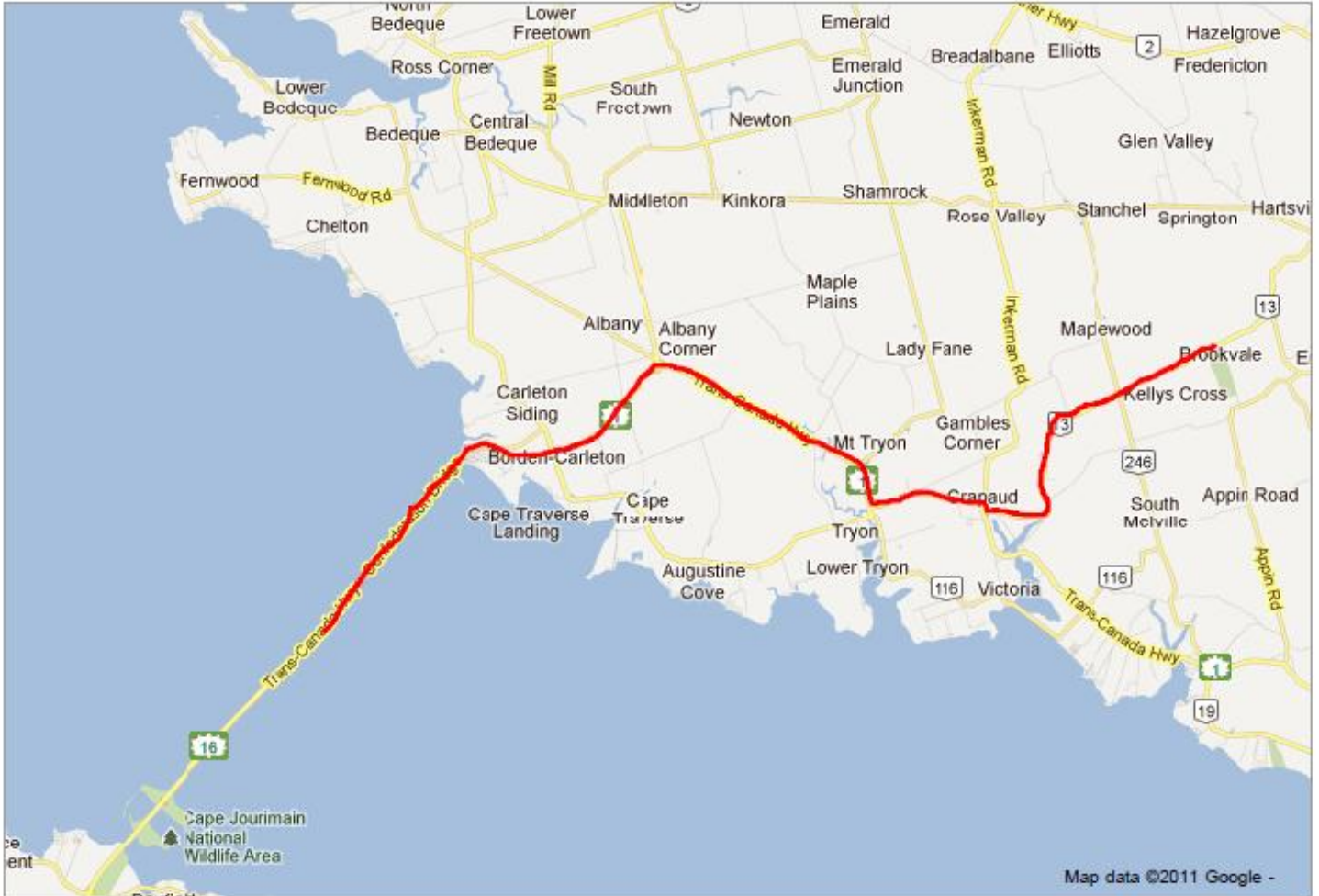
**APPLICATION TO SKI OUT OF AGE CLASS FOR CANADIAN CHAMPIONSHIPS, EASTERN AND  
WESTERN CANADIAN CHAMPIONSHIPS AND NORTH AMERICAN CUPS IN CANADA.**

In accordance with Article 4.1 of this Hosting Policy, athletes may not compete in more than one age class higher than their official class, e.g. Junior Boys and Junior Girls may only compete as high as Senior Boys and Senior Girls, etc

In accordance with Article 4.2, athletes who are in the Senior Boys and Senior Girls classes and wish to compete in the Youth class in a competition may under special circumstances receive an exemption to do so. In order to receive an exemption, the following procedure must be followed:

1. The Division/Region must advise the respective national office in writing that the athlete in question has met the divisional standards and criteria as established in the Division/Region's selection policy.
2. The divisional/regional or personal coach of the athlete in question must advise the respective national office in writing that the athlete in question meets the development standards necessary to take part in this event with the published competition distances and circumstances and that it is the professional opinion of the coach that the athlete's participation is in no way undermining the long term athlete development principles.
3. The parents of the athlete in question must advise the respective national office in writing that they consent to their son/daughter taking part in Youth class with the full comprehension that the competition distances and circumstances are more demanding than their current class of competition and that they will also be required to carry a rifle for the competitions.
4. No one younger in age than Junior Boys/Junior Girls is allowed to register for Canadian Championships.
5. Divisions/regions are required to submit the request with all the required letters as stated above to the respective national office no later than 14 days prior to the event. Biathlon Canada will consider Canadian athletes and USBA for the US athletes.

# Driving Directions to Brookvale Provincial Ski Park



## Driving directions to Brookvale Provincial Ski Park



**Confederation Bridge**  
Borden-Carleton, PE C0B 1X0

**1.** Head **northeast** on **Confederation Bridge/ Trans-Canada Hwy** toward **Abegweit Blvd**  
Continue to follow Trans-Canada Hwy

22.7 km



**2.** Turn left onto **PE-13 N**

10.3 km



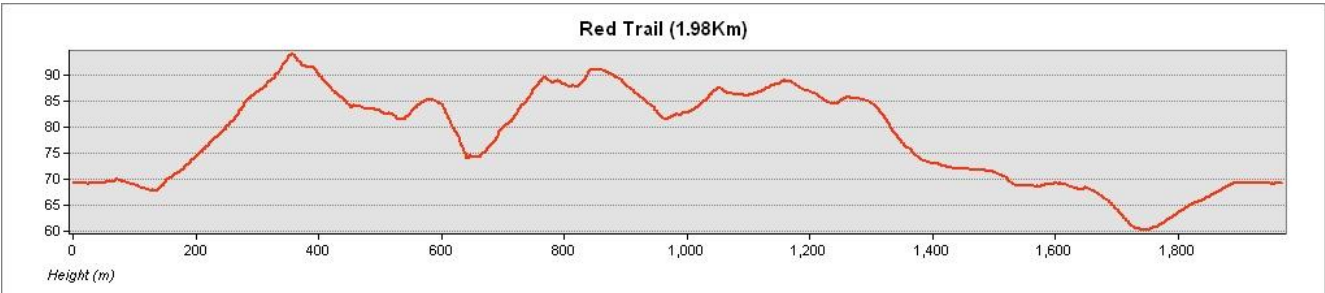
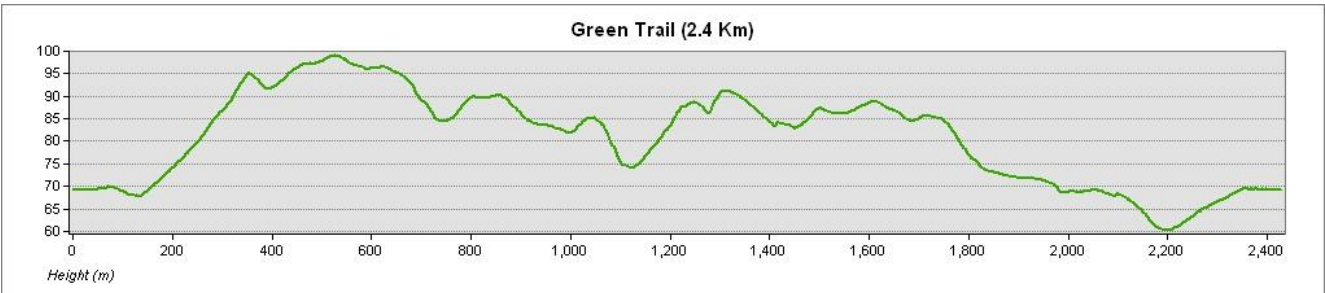
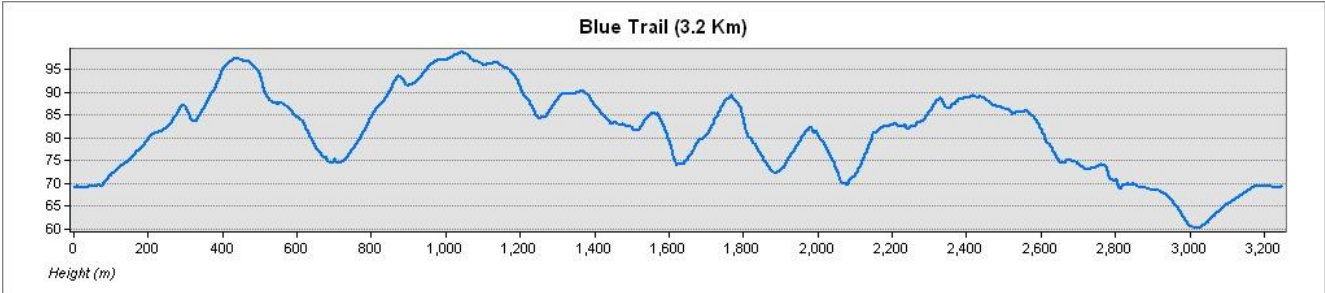
**3.** Turn right

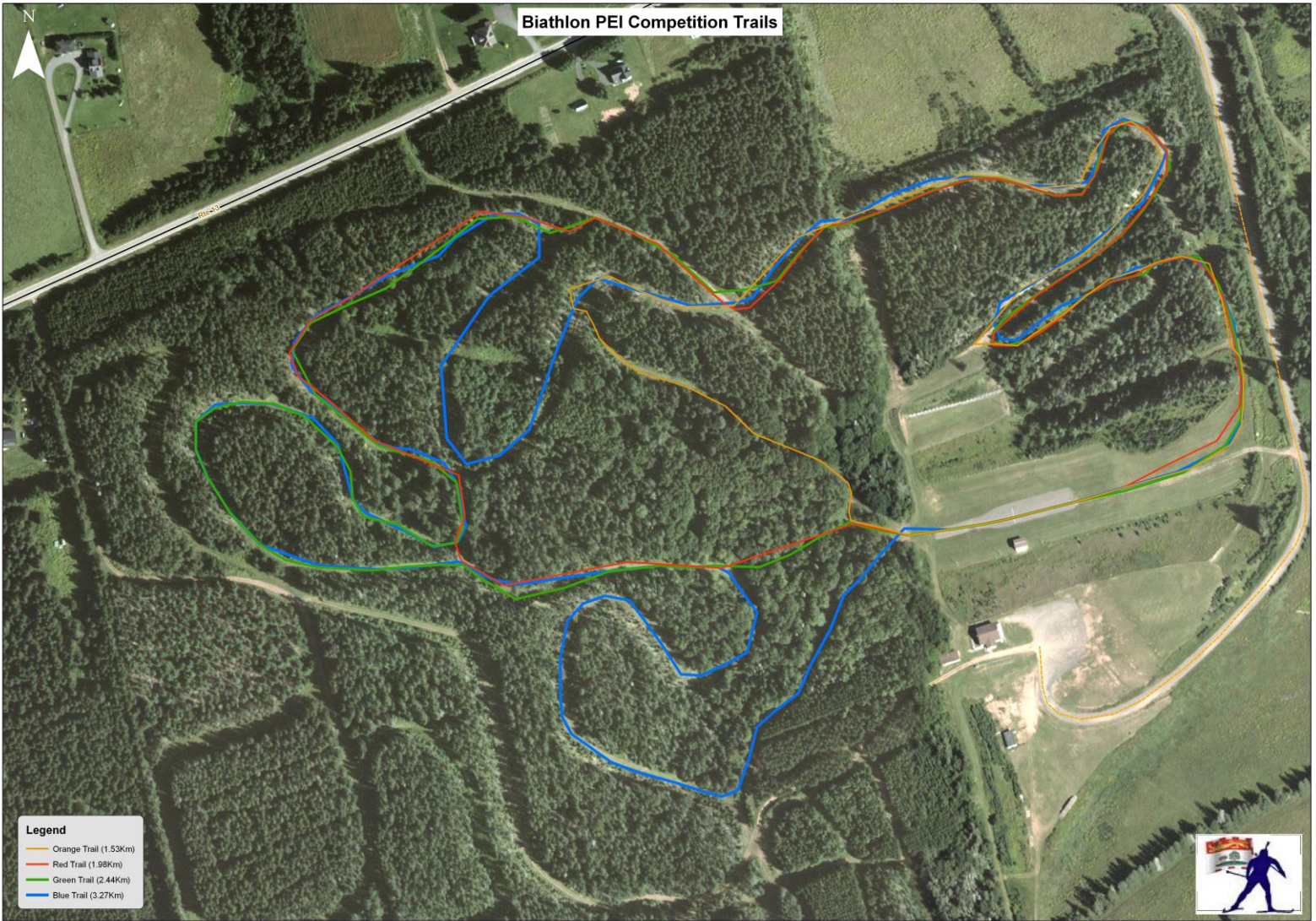
1.3 km



**Brookvale Provincial Ski Park**  
Lot 30, Prince Edward Island

# Brookvale Biathlon Trail Elevation Profiles





# Stadium Layout

